

SECTION 21, T.6N.,R.1W., S.L.B.&M.

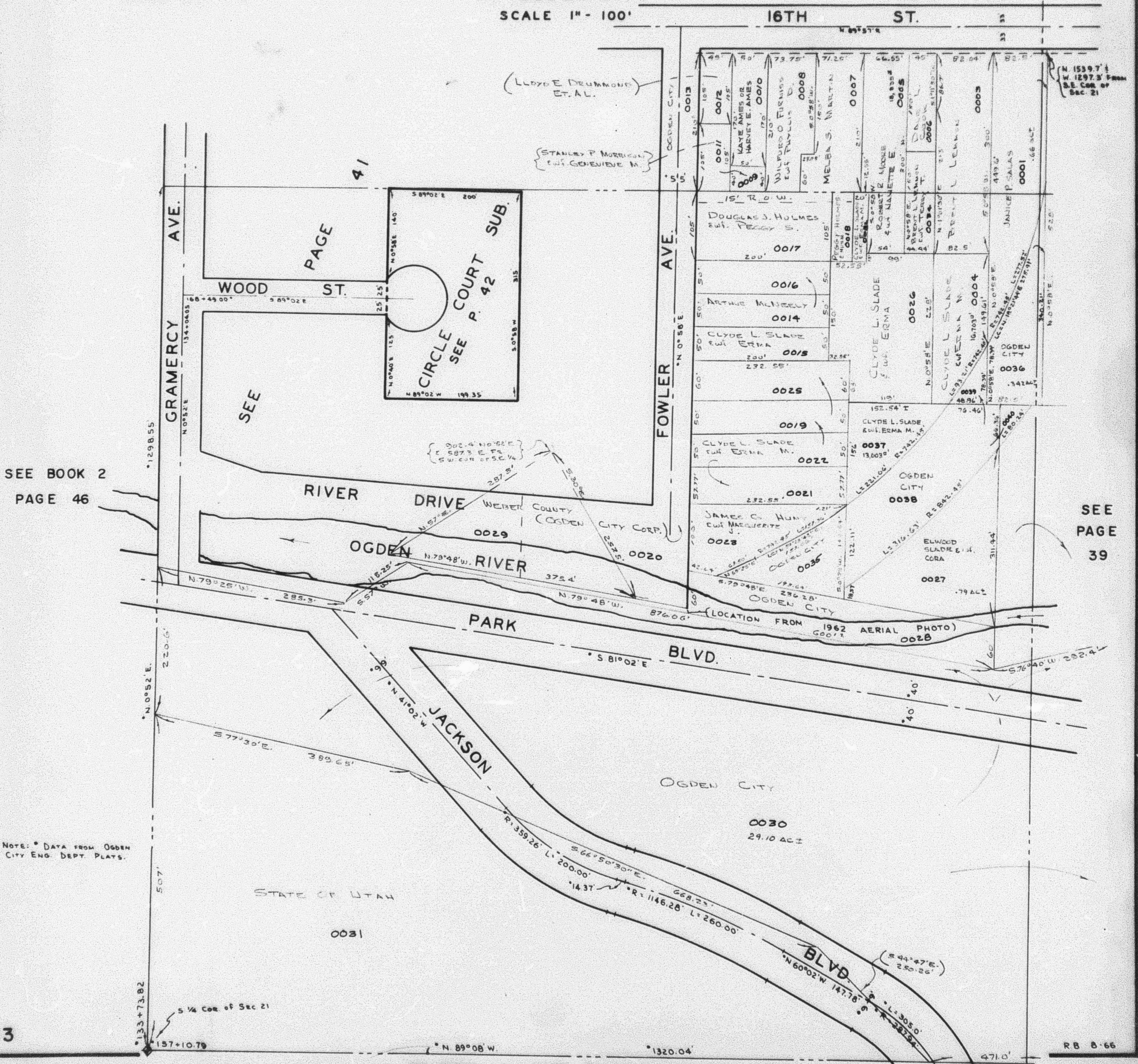
TAXING UNIT: 25

IN OGDEN CITY

PREFIX: 13-040

SCALE 1" = 100'

16TH ST.



SEE BOOK 2
PAGE 46

SEE
PAGE
39

NOTE: * DATA FROM OGDEN
CITY ENG. DEPT. PLATS.